



LOMOcompact BY ABL SURSUM

SWITCH, CONTROL, MONITOR

LOMOware

EASY TO PROGRAM

LOMOcompact, the newly designed ABL SURSUM control system can be intuitively programmed using the LOMOware Function Block Diagram.



TOUCH-SCREEN DISPLAY FOR DIRECT ACCESS

ABL SURSUM has the perfect display for your application. Displays available in IP20 and the even higher IP65 protection rating.



LOMOcompact APPLICATIONS

HEATING, COOLING, VENTILATION & AIR CONDITIONING

power management, control systems

BUILDING SERVICES TECHNOLOGY

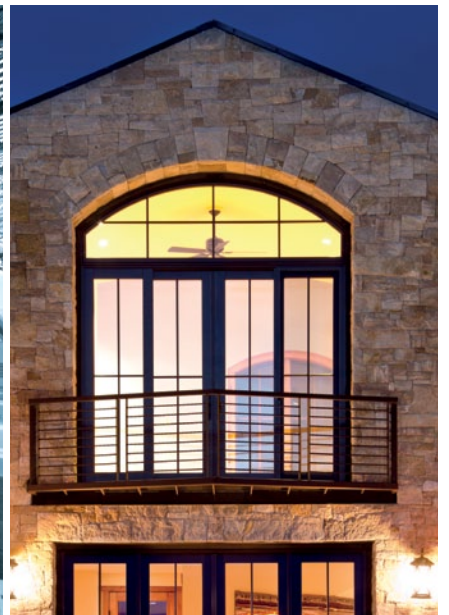
Control systems for lighting, monitoring sensors,
alarm and secure access systems

MACHINE CONTROL

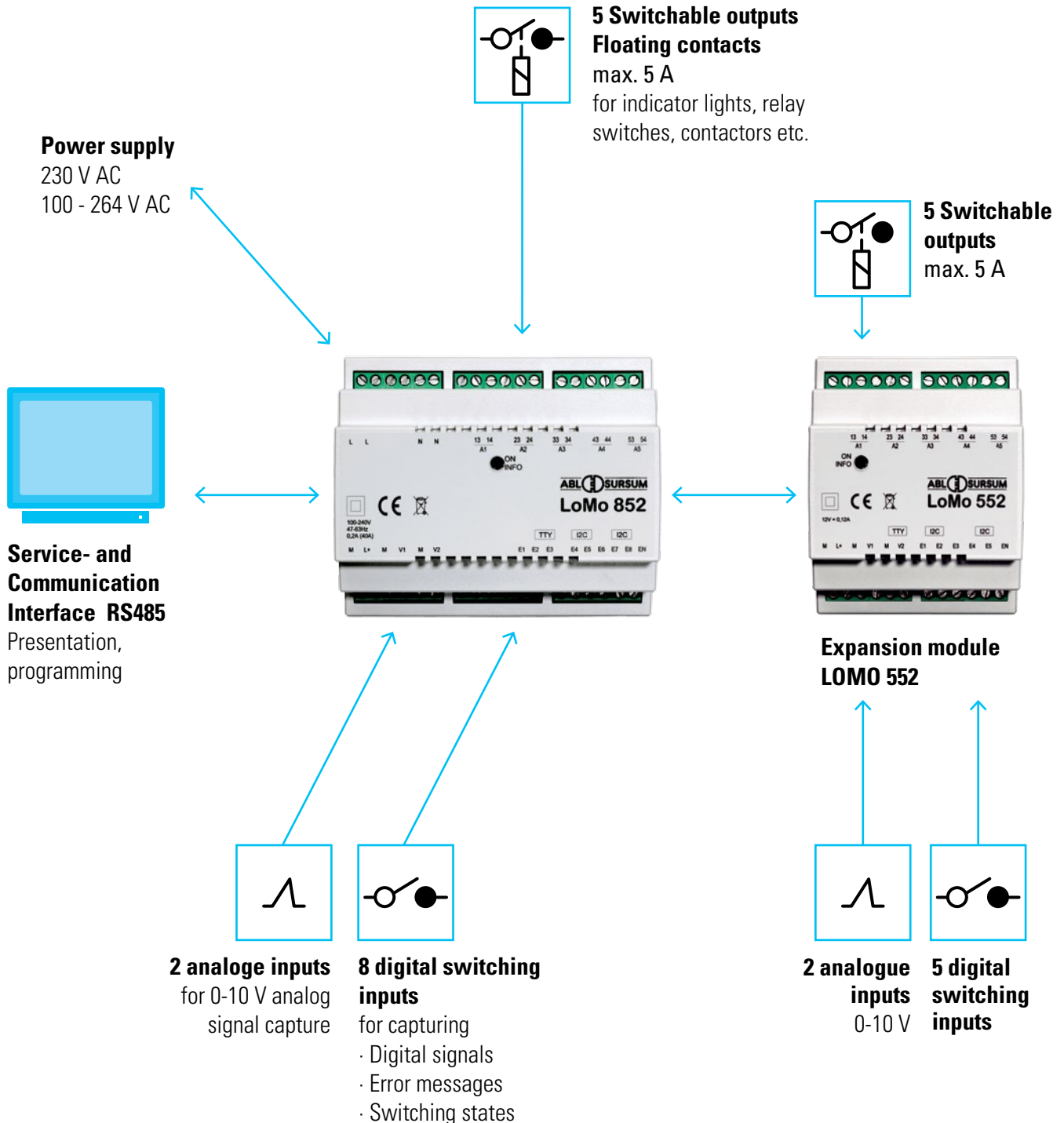
Control systems for pumps, valves, sewage
treatment plants, air supply and extraction,
compressed air systems

ELECTRICAL INSTALLATION

Overall control systems for mobile kitchen installations



ONE SYSTEM MULTIPLE APPLICATIONS



With the LOMOcompact, ABL SURSUM offers an intelligent and flexible solution for automated processes. The newly designed ABL SURSUM control system can be intuitively programmed using the LOMOWare application. The LOMOcompact can be used to replace a whole range of DIN rail-mounted devices such as relays and time switches. All switching options are directly accessible via the touchscreen display. Expandable by up to 2 additional modules.

MORE POSSIBILITIES BETTER PERFORMANCE

LOMOcompact

Logic module Part
Art.no. LOM0852

Inputs: 8 x digital (100-264 V AC)
2 x analog (0-10 V)
Switchable outputs: 5 x 230 V~/30 V = 5 A
floating contacts
Interface: RS485
DC output: 1 x 11.3 V 280mA Rated voltage: 230 V~ 50Hz
Protection rating: IP20



Expansion module

LOMO 552
Art.no. LOM0552

Inputs: 5 x digital (100-264 V AC)
2 x analog (0-10 V)
Switchable outputs: 5 x 230 V~/30 V = 5 A
floating contacts
Interface: RS485
Rated voltage: 12 V = 120mA Protection
rating: IP20



Touchscreen display

Art.no. LOMD112
(IP20)
Art.no. LOMD212
(IP65)

Display: 7" TFT 800 x 480 (WVGA)
4wire, resistive Touchscreen
Interface: RS232 & RS485
Protection rating: IP20 or IP65
User programmable GUI and functions (via script)



LOMOware

Software
Art.no. LOMW100

Programming application
for LOMOcompact



Programming cable

Length: 180 cm
Art.no. LOMK218

Connection cable

LOMOcompact to Touchscreen display
Length: 300 cm
Art.no. LOMK330

Power cord

for Touchscreen display
Length: 300 cm
Art.no. LOMK430

LOMO STARTERPACK

LOMOcompact
LOMOware &
Programming cable

Art.Nr. LOMSP10

SIMPLE
LOGICAL
EFFICIENT

Worldwide leadership in connecting and
protecting power – for over 90 years

Made in Germany

ABL SURSUM

Bayerische Elektrozubehör GmbH & Co. KG

Ottensooser Straße 22
91207 Lauf / Pegnitz

PO Box 10 02 47
91192 Lauf / Pegnitz

Phone +49 (0) 9123 188-0
Fax +49 (0) 9123 188-188

info@abl-sursum.com
www.abl-sursum.com